

FACT SHEET

HaystackID® Relativity® Migration Services with RelativityOne Data Migration Competency

A Secure, Defensible, and Leadership-led Pathway from Legacy eDiscovery to RelativityOne—Engineered to Preserve Continuity, Accelerate Value, and Enable Day-one Use of Analytics and Relativity aiR™

HAYSTACK®



Strategic Migration Momentum from Day One

HaystackID® delivers end-to-end migrations from legacy Relativity Server and other review platforms to **RelativityOne**, led by senior program ownership and governed by a matter-based methodology with embedded validation. Certified in the RelativityOne Data Migration competency, HaystackID manages discovery, planning, movement, and verification of evidentiary data and configurations—issuing audit-ready documentation and post-cutover enablement so teams can immediately leverage analytics and **Relativity aiR™**. This matters because legacy estates increase risk and cost, regulators expect defensible lineage, and consolidation unlocks cloud performance and AI-assisted review. Vendor-reported examples note up to four times faster processing and up to 80% reduction in review time when properly implemented (outcomes vary by data, configuration, and workflow). The offering converts an inevitable transition into a durable operational advantage, providing predictable timelines and budgets, minimizing disruption to active matters, accelerating time to value, and offering a clear path to decommission legacy infrastructure.

A dedicated senior director of client services aligns legal, business, and technical tracks from kickoff through post-cutover. In parallel, a data migration project consultant designs and governs chain-of-custody controls—hashing, counts, targeted sampling, and exception logging—so every movement is auditable, and integrity is preserved while live reviews continue.

“

A migration is not just a data transfer—it's an operational transition where continuity and defensibility are non-negotiable.

— Andy Parrish, Chief Operating Officer, HaystackID

”

Key Features

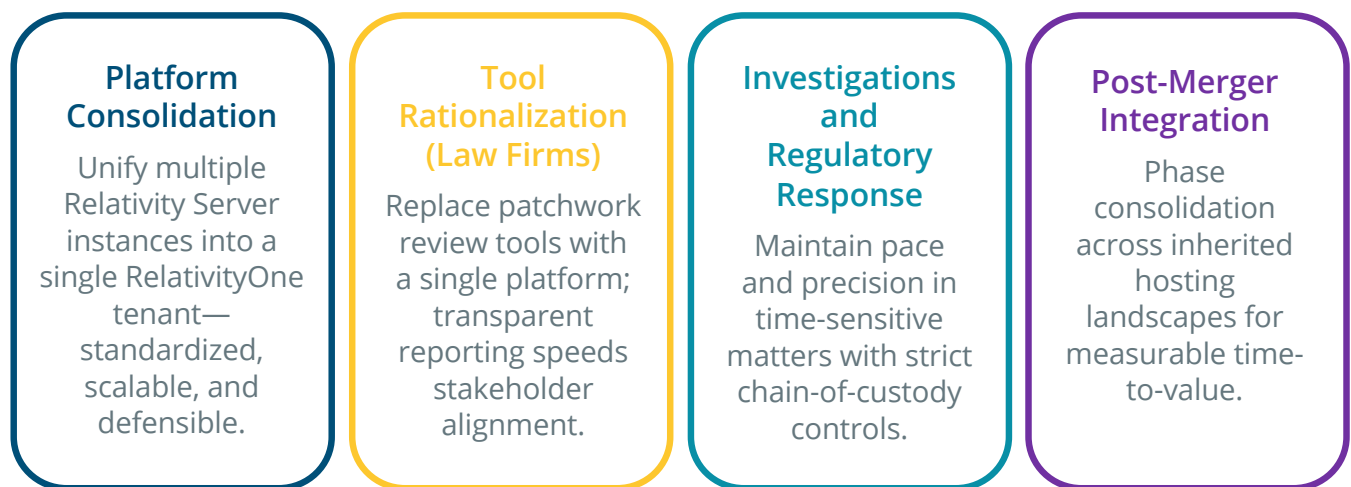
The program blends **accountable leadership**, **tailored execution**, and **auditable validation** to ensure your data and configurations land in RelativityOne ready for immediate analytics and Relativity aiR engagement—all while maintaining the control and continuity required for **judicial and regulatory scrutiny**.

- **Executive Ownership:** Single accountable leader for planning, stakeholder alignment, risk governance, and cutover orchestration.
- **Matter-Based Methodology:** Workflows tuned to each matter’s complexity, sensitivity, and activity level; representative pilots validate throughput and controls before scaling.
- **Embedded Validation:** Hashing, counts (items/sets), targeted sampling, and exception logs with tracked remediation at each stage.
- **Continuity by Design:** Calibrated cutover windows to reduce downtime; documented rollback options per wave.
- **Context Preservation:** Structured data, custodial collections, review sets, configurations, and analytics artifacts are maintained for immediate usability in RelativityOne.
- **Day-One Enablement:** Post-cutover health checks, user/role mapping, and targeted enablement for analytics and Relativity aiR.

Applied in practice, these capabilities address common modernization needs.

Practical Applications

Built for enterprise-scale modernization, this expert-led service **reduces risk**, **accelerates stakeholder buy-in**, and **protects evidentiary integrity**—especially critical in time-sensitive investigations and post-merger integrations.



These scenarios translate into measurable operational gains; the next section summarizes the benefits organizations typically realize.

Real-World Benefits

Retire legacy risk and cost while gaining elastic scale and integrated analytics. Vendor-reported results include up to **four times faster processing** and up to **80% reduction in review time** with properly implemented Relativity aiR-enabled workflows; outcomes vary by data, configuration, and workflow.

- **Continuity:** Active reviews proceed with minimal downtime.
- **Predictability:** Fixed-fee options for defined scopes or time-and-materials for bespoke, multi-phase programs.
- **Risk Reduction:** Comprehensive lineage documentation and QA packets suitable for judicial or regulatory review.
- **Performance and Scale:** Cloud resources and analytics available on day one.

The results above are driven by a structured approach; the six stages below detail how migrations are executed.



Defensible workflow is our north star... our validation regimen is built to withstand scrutiny—while minimizing downtime for active matters.

— **Todd Haley, Executive Vice President of Operations, HaystackID**



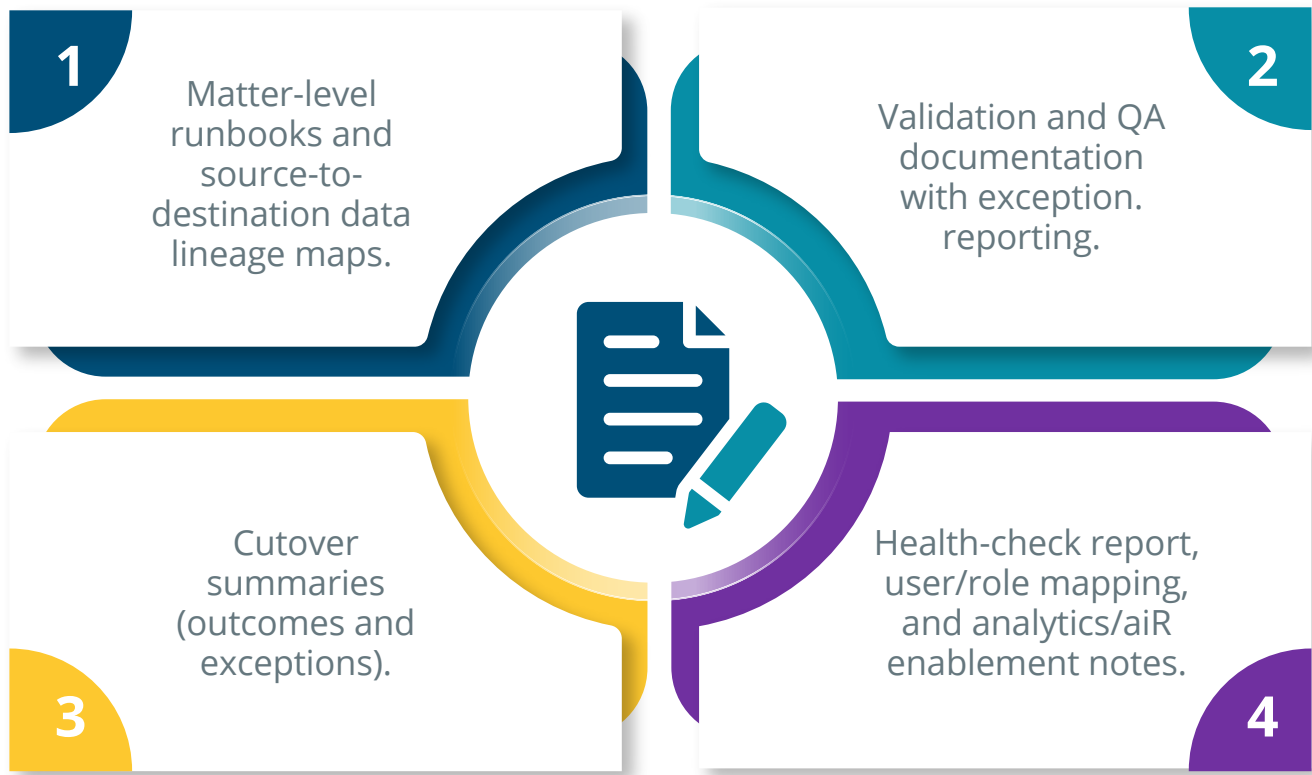
Six-Stage Migration Methodology

A six-stage path emphasizes **validation and continuity** from assessment through enablement, with rollbacks documented and cutovers calibrated to minimize disruption.

1. **Readiness and Scoping:** Inventory workspaces, custodians, data sources, configurations, and analytics artifacts; surface risks and dependencies.
2. **Pilot Migration:** Prove throughput and quality on representative matters; refine design and wave plan.
3. **Wave Planning:** Sequence matters using a proven status-based methodology to protect ongoing work; set cutover windows and rollback options.
4. **Execution and Validation:** Export/import with hashing, counts, targeted sampling, and exception management; remediate and record exceptions.
5. **Cutover:** Orchestrate calibrated transitions; confirm continuity for active matters; capture outcomes and exceptions.
6. **Post-Cutover Enablement:** Health checks, user/role mapping, targeted enablement for analytics and Relativity aiR; deliver documentation package.

Documentation and Coordination

Audit-ready artifacts that provide **defensibility** and **operational readiness**.



With scope and outputs clarified, the availability and engagement models are as follows.

Availability and Engagement

Delivered by a **competency-certified team**, with **commercial flexibility** to match environment complexity and timeline pressures.

- **Destination Platform:** RelativityOne (cloud).
- **Engagement Models:** Fixed-fee (defined scope) or time-and-materials (multi-phase).
- **Options:** Readiness assessments; accelerated or after-hours cutovers; advanced analytics tuning; user enablement.
- **Status:** Available now via HaystackID's RelativityOne Data Migration competency-certified team.

With delivery options defined, the next step is simple: **request the Migration Readiness Packet** from HaystackID.

Learn More Today.

HaystackID's Migration Readiness Packet provides a concise preview of the program and its defensibility artifacts, including an engagement outline, a sample matter-level runbook, a source-to-destination data lineage map, example validation/QA materials (hashing, counts, targeted sampling, exception logs), a cutover summary, and a post-cutover health-check checklist—plus an overview of engagement options (fixed-fee or time-and-materials) and optional accelerators. To initiate the conversation or obtain materials, contact your HaystackID account team or email Info@HaystackID.com; additional resources are available at HaystackID.com.

About HaystackID®

HaystackID solves complex data challenges related to legal, compliance, regulatory, and cyber requirements. Core offerings include Global Advisory, Cybersecurity, Core Intelligence AI™, and ReviewRight® Global Managed Review, supported by its unified CoreFlex™ service interface. Recognised globally by industry leaders, including Chambers, Gartner, IDC, and Legaltech News, HaystackID helps corporations and legal practises manage data gravity, where information demands action, and workflow gravity, where critical requirements demand coordinated expertise, delivering innovative solutions with a continual focus on security, privacy, and integrity. Learn more at HaystackID.com.

Assisted by GAI and LLM technologies.