

FACT SHEET

HaystackID[®] Core Intelligence AI Case Insight[™]

A GenAI-Powered Matter Intelligence Engine
for Legal and Investigative Teams

HAYSTACK[®]



Strategic Case Intelligence from Day One

In today's high-stakes legal and investigative environments, speed, precision, and defensibility are non-negotiable. Yet legal teams are often overwhelmed by exploding data volumes, compressed timelines, and intensifying regulatory pressures.

Core Intelligence AI Case Insight™—a generative AI-powered (GenAI) matter intelligence engine from HaystackID, delivered in partnership with eDiscovery AI—redefines how professionals gain visibility into electronically stored information (ESI). It empowers legal and investigative teams to move from data overload to actionable clarity in days, not weeks.

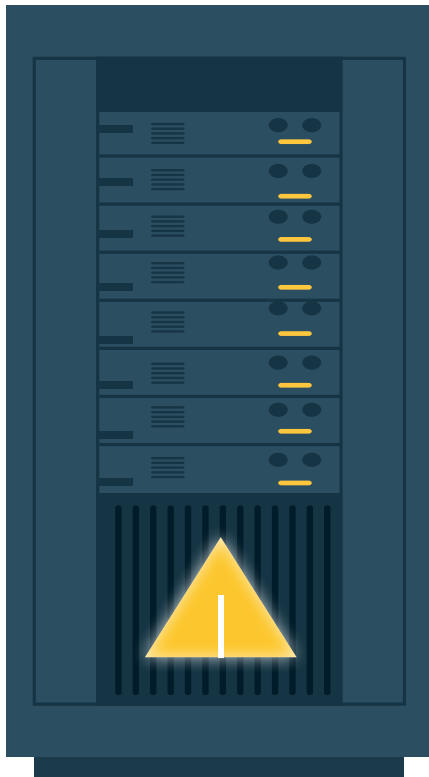
By uniting advanced GenAI with expert legal oversight, Case Insight delivers more than traditional early case assessment. It dynamically surfaces key facts, maps relationships, flags unknown risks, and contextualizes findings to support faster and more strategic legal decisions—all while significantly reducing manual effort and cost.

With a foundation rooted in practical functionality and advanced contextual analysis, Case Insight offers a robust suite of capabilities that elevate every phase of the discovery and investigation process.

Key Features

Smarter Legal Intelligence Through GenAI

Built on advanced GenAI, Case Insight offers an innovative suite of capabilities that go far beyond traditional eDiscovery tools. Each feature is crafted to optimize efficiency, enhance precision, and uncover meaningful context in massive volumes of legal data—ensuring no important detail goes overlooked. **Key features include:**



- **AI-Powered Contextual Analysis:** Maps relationships, uncovers themes, and detects hidden patterns beyond document responsiveness.
- **Automatic Issue-Based Categorization:** Classifies documents by legal issues at ingestion, not just keywords.
- **Dynamic Keyword Generation:** Extracts relevant search terms organically from the dataset.
- **Summarization and Contextual Memos:** Produces automated memos highlighting key facts, issues, risks, and document citations.
- **90%+ Recall for Relevant Materials:** Ensures fewer missed documents and improves case defensibility.
- **Real-Time Triage and Prioritization:** Prioritizes custodians, documents, and data sources with early insight.
- **Seamless Workflow Integration:** Supports Relativity Server and SaaS environments for rapid deployment.

These capabilities come to life through a wide array of real-world legal workflows—discover how teams are applying Case Insight across practical use cases.



The adoption of AI within the legal industry is rapidly accelerating, and innovative solutions like Core Intelligence AI Case Insight demonstrate the power of generative AI in driving strategic decision-making and optimizing legal workflows. By incorporating advanced AI-driven intelligence into case analysis, legal teams can enhance efficiency, reduce costs, and improve defensibility—critical advantages in today's evolving regulatory and litigation environment.

—Ryan O'Leary, Research Director for Privacy and Legal Technology, IDC



Practical Applications

Driving Efficiency Across Legal Workflows

Case Insight seamlessly integrates into the legal technology ecosystem, supporting a wide range of legal, investigative, and compliance applications. Whether accelerating early case assessments or refining deposition prep, the platform transforms data challenges into strategic opportunities.

Practical applications include:

- **Early Case Assessment (ECA):** Identify risks, strengths, and weaknesses immediately.
- **Custodian and Data Source Prioritization:** Isolate hot documents and guide discovery strategy.
- **Data Subject Access Requests (DSARs):** Rapidly identify and classify PII or sensitive data.
- **Deposition and Trial Preparation:** Create concise, curated review sets for witness prep.
- **Investigation Acceleration:** Detect patterns, anomalies, and red flags in large datasets.
- **Received Production Review:** Pinpoint under-produced or contradictory opposing materials.
- **Document Review Set Identification:** Focus manual review on only the most relevant items.

These applications lead to tangible outcomes that improve efficiency, cut costs, and reduce legal exposure.

Real-World Benefits

Quantifiable Impact for Legal Teams

HaystackID's Case Insight delivers more than technical innovation—it drives measurable improvements in time savings, cost control, risk mitigation, and strategic planning. These real-world benefits empower organizations to better manage discovery obligations and litigation risks.

Real-world benefits include:

- **Time Savings:** Tasks that once required weeks can now be completed in days.
- **Cost Reduction:** Minimizes manual review volume and attorney hours.
- **Risk Mitigation:** High recall reduces the chances of missed or privileged documents.
- **Strategic Readiness:** Enables proactive, data-driven litigation and investigative strategy.
- **Scalability:** Effective on datasets ranging from thousands to millions of documents.

Behind these outcomes lies robust, adaptive technology designed specifically for the evolving demands of legal data intelligence.



Core Intelligence AI Case Insight goes beyond data analysis—it interprets context, identifies hidden relationships, and delivers intelligence that allows legal teams to take decisive action with confidence.

— Jim Sullivan, CEO, eDiscovery AI



Technology Highlights

Next-Generation GenAI with Expert Oversight

At the core of Case Insight lies a powerful fusion of GenAI and legal expertise. The platform's advanced language models dynamically interpret data, surfacing context-aware insights without extensive training or manual tuning—ensuring precision, agility, and scale. **Highlights include:**






- **Minimal prompt iteration**—just one coherent case description is needed.
- **Real-time** document summarization and issue recognition.
- **90%+ recall rates** validated in high-volume data scenarios.
- **Adapts dynamically** to case narratives and new data types.

With these capabilities, Case Insight adapts to a wide range of matter types and excels at performing across common, high-stakes legal scenarios.

Example Use Cases

Purpose-Built for High-Value Legal Scenarios

From compliance workflows to complex litigation, Case Insight supports a diverse range of real-world applications. The platform's versatility allows legal professionals to deploy it across various matter types, tailoring workflows to fit evolving challenges. **Use cases include:**

	Regulatory Response Accelerate DSARs and production analysis with automated categorization.
	Litigation Strategy Identify critical documents before review begins.
	Internal Investigations Surface suspicious communications or data anomalies quickly.
	Deposition Prep Curate must-review materials for witness interviews.
	Privileged Review Accurately identify privileged content using context-aware GenAI.

Whether supporting large enterprises or focused legal teams, Case Insight is designed for seamless and immediate adoption.

Availability and Deployment

Flexible, Integrated, and Ready to Use

Case Insight is designed for ease of adoption and seamless integration. Compatible with both Relativity Server and SaaS environments, it can be deployed immediately to enhance discovery, investigative, and compliance workflows at scale.

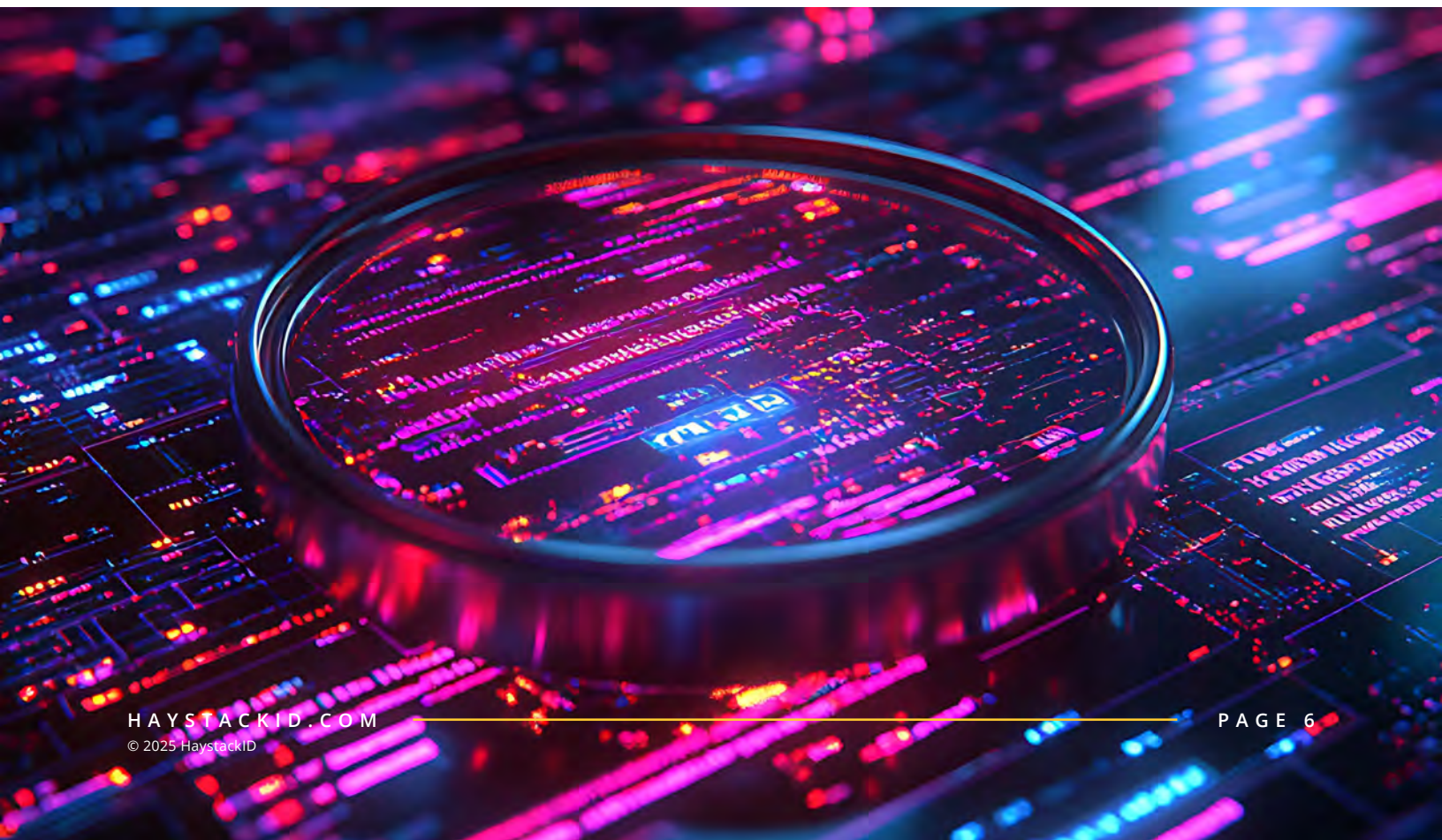
- **Platform Support:** Relativity Server and SaaS.
- **Deployment:** Rapid implementation into existing workflows.
- **Availability:** Live and in use now.

HaystackID's Core Intelligence AI Case Insight empowers legal teams to turn complex data into strategic action from day one. By combining GenAI with expert oversight, it delivers faster insights, reduces risk, and supports smarter decisions across a range of legal scenarios. As data challenges grow, Case Insight provides a powerful, scalable solution for modern legal excellence.



Core Intelligence AI Case Insight is not just another AI-powered tool—it is a strategic intelligence engine designed to empower legal teams from the outset of a case.

— Esther Birnbaum, EVP of Legal Data Intelligence, HaystackID



Learn More. Today.

Explore how Core Intelligence AI Case Insight can elevate your legal operations, visit HaystackID.com or [connect with the team](#) to schedule a live demonstration or briefing. This solution—delivered in partnership with eDiscovery AI—is designed for teams seeking a competitive edge in data-driven legal matters.

About HaystackID®

[HaystackID](#) solves complex data challenges related to legal, compliance, regulatory, and cyber events. Core offerings include Global Advisory, Data Discovery Intelligence, HaystackID Core® Platform, and AI-enhanced Global Managed Review powered by its proprietary platform, ReviewRight®. Repeatedly recognized as one of the world's most trusted legal industry providers by prestigious publishers such as Chambers, Gartner, IDC, and Legaltech News, HaystackID implements innovative cyber discovery, enterprise solutions, and legal and compliance offerings to leading companies and legal practices around the world. HaystackID offers highly curated and customized offerings while prioritizing security, privacy, and integrity. For more information about how HaystackID can help solve unique legal enterprise needs, please visit HaystackID.com.

Assisted by GAI and LLM Technologies